

BALTICUM-2006



Category: climbing (up to 3500 m)

Bolshoi-Vudjavr, 1167 m
“Lesenka” on North Wall, 5A (Russian grade)

Team: Hiemäe, Andres (EST)
Põld, Tõnu (EST)
Aasa, Marko (EST)

Kaunas
2006

BALTICUM - 2006

Category: climbing (up to 3500 m)

Bolshoi-Vudjavr, 1167 m, “Lesenka” on North Wall, 5A

Pankov, M, 2002

Khibiny massive, Circus of Ganeshin, Kolsky peninsula, Russia

8.6.1.13 (number of route in Russian Routes Classification, webpage of Russian Alpinism Federation)

Technical passport of the ascent:

1. Region: Khibiny massive, Circus of Ganeshin
2. Peak: Bolshoi-Vudjavr , 1167 m, route: “Lesenka” on North Wall
3. Category of difficulty: 5A/TD+ (Russian grade/Alpin grade),
4. Characteristics of route: rocks, some sections were wet
5. Height difference of the route: 470 m
Length of the route: 510 m
Total lengths on technical sections: VI – 75m (A4 - 10m, A3 - 35m, A2 – 25m), V – 162m, IV - 123m
Steepness of the technical part: 75°
Steepness of the route: 60°
6. Placed and removed technical hardware on route (totals): 55 times (pitons, friends, nuts/chocks, slings)
Movements made with help of etriers (ITO): ca 30 times
7. Spent hours on route: 17 hours (ascent only), 1 day, no overnights on route
8. Instructor/Leader: Hiimäe, Andres (EST, mountaineering club “FIRN”)
Climbers: Põld, Tõnu (EST, mountaineering club of Jaan Künnap)
Aasa, Marko (EST, mountaineering club of Jaan Künnap)
9. Departure from the base camp: at 05:00, 17. july 2006
At the start of the route: at 05:40, 17. july 2006
On top, end of the route: at 22:40, 17. july 2006
Arrival to the base camp: at 00:00, 17. july 2006
10. Weather conditions: sunny, few clouds during the day, around +5...+15°C, 24-hours of day-light

Technical route description (in russian):

Подход в цирк Ганешина, в лавинный кулуар.

R0 – R1: Из лавинного кулуара г. Вудъяврчорр, у начала гранитных плит – налево по внутреннему углу 50м, 60° III+ .

R1 – R2: Затем выход из угла по левой стенке 5м, 60° IV+ .Дальше вверх, под огромную полку 15м, 45° III. Выход на полку – стенка 5м, 90°, IV+, дальше траверс по легкой полке 25м до стационарной станции - петля вокруг большого камня.

R2 –R3: Вверх, по внутреннему углу 7м, 90° V, дальше по серии каминов – 43м, 70° IV+. Хорошее место для станции.

R3 – R4: Далее по внутреннему углу 20м, 60° IV, а затем по стенке – 25м, 80°, V. Хорошее место для станции, на станции прибита лестница.

R4 – R5: От лестницы, по направлению к огромному внутреннему углу и далее по углу – 50м, 75°, V. Полувисячая станция.

R5 – R6: Дальше – по углу, под карнизы – 35м, , 75°, V. Траверс с небольшим набором высоты 5м, VI .На станции полка на двоих, контрольный тур, забита “морковка” и шлямбур.

R6 –R7: Из под карниза вертикально вверх по глухой щели 10м 100° VI A₄; 15м 90° VI A₃, мимо хорошей полки для возможного ночлега – вверх 20м 70° IV. Хорошее место для станции.

R7 – R8: Дальше по стенке и внутреннему углу, до узкой полки, уводящей налево 15м 90° IV;15м 80° III+, траверс 15м III+. Хорошее место для станции;

R8 – R9: Вверх, по внутреннему углу (30м 75° V); затем траверс влево 5м III и стенка 10м 70° IV. Хорошее место для станции, забит шлямбур.

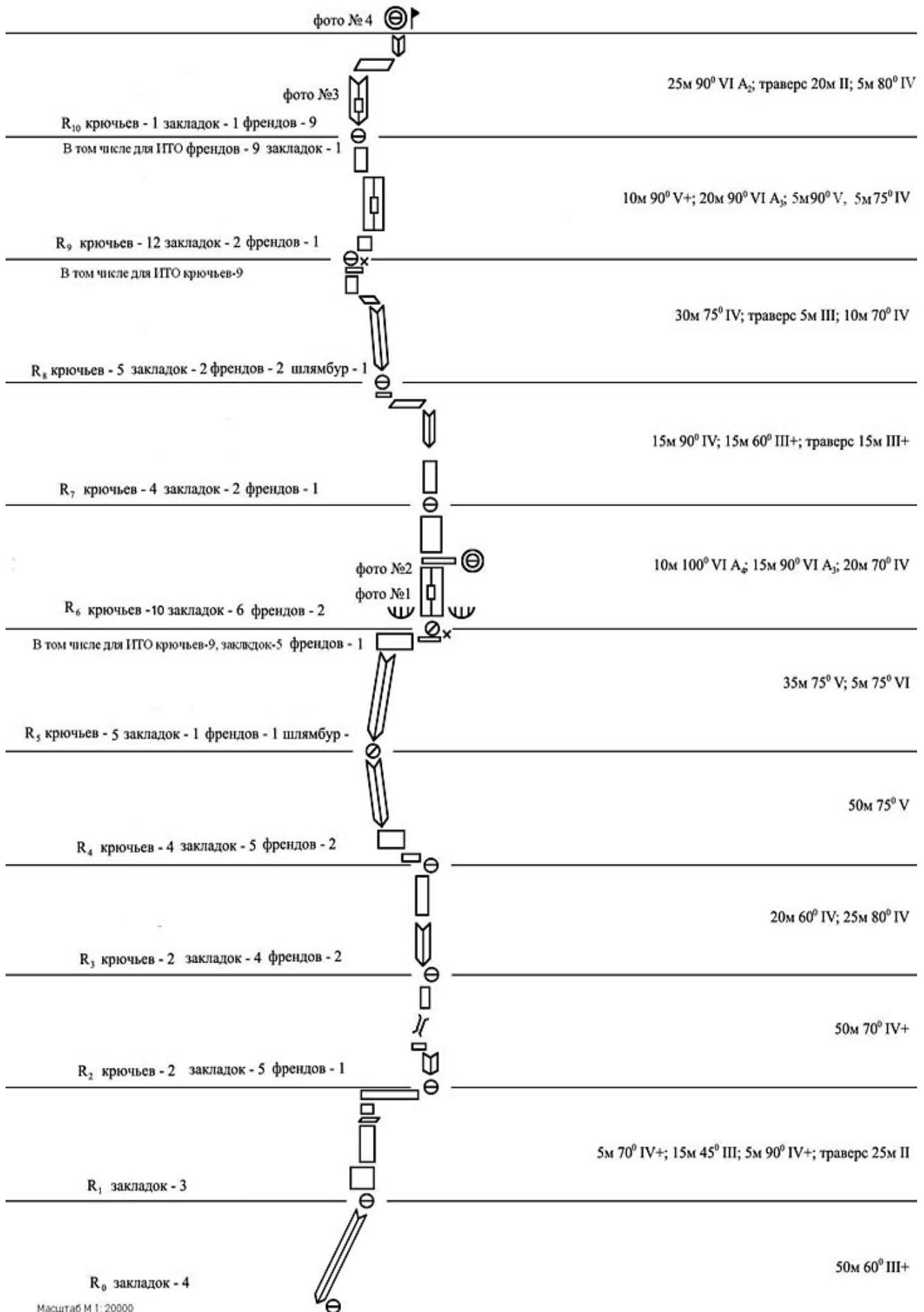
R9 – R10: От станции вправо и вверх 10м 90° V+; затем глухая щель - 20м 90° VI A₃, дальше по скалам 5м 90° V, 5м 75°. Хорошее место для станции.

R10 – R11: От станции вертикальный внутренний угол (25м 90° VI A₂), выход на большую полку и траверс вправо - 20м II; затем по внутреннему углу (5м 80° IV) – выход на вершину.

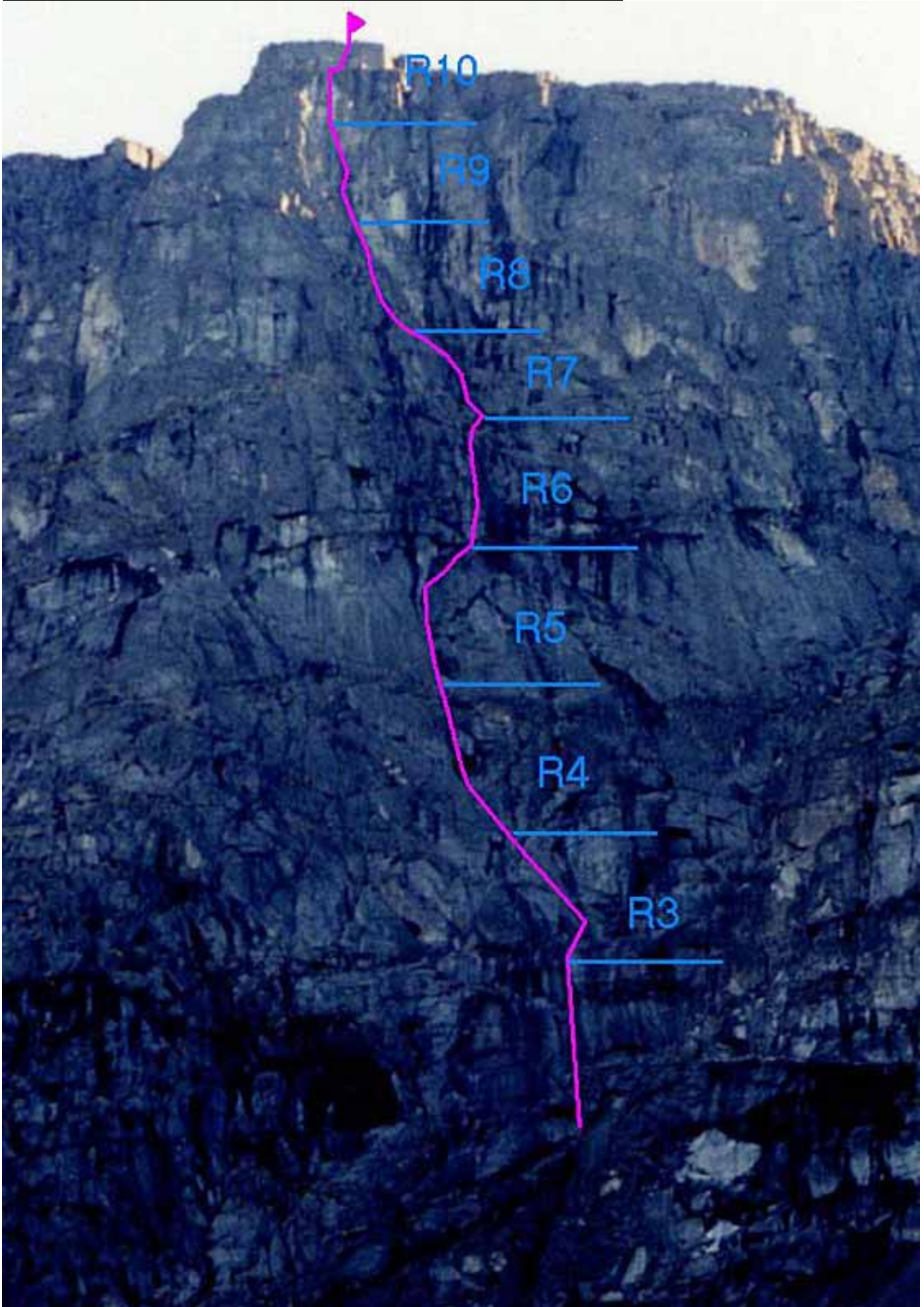
Контрольный тур выложен камнями на плато.

Скалы на маршруте частично заглажены, участок **R4 – R6** проходится по мокрым скалам; много щелей под очень тонкие крючья. Хорошо идут крючья всех типов, и закладные элементы – фрэнды, стоппера. Уровень свободного лазания, предьявляемого к маршруту ба. В условиях полярного дня (лето) возможно прохождения маршрута в двойке в альпийском стиле.

Technical schema of the route:



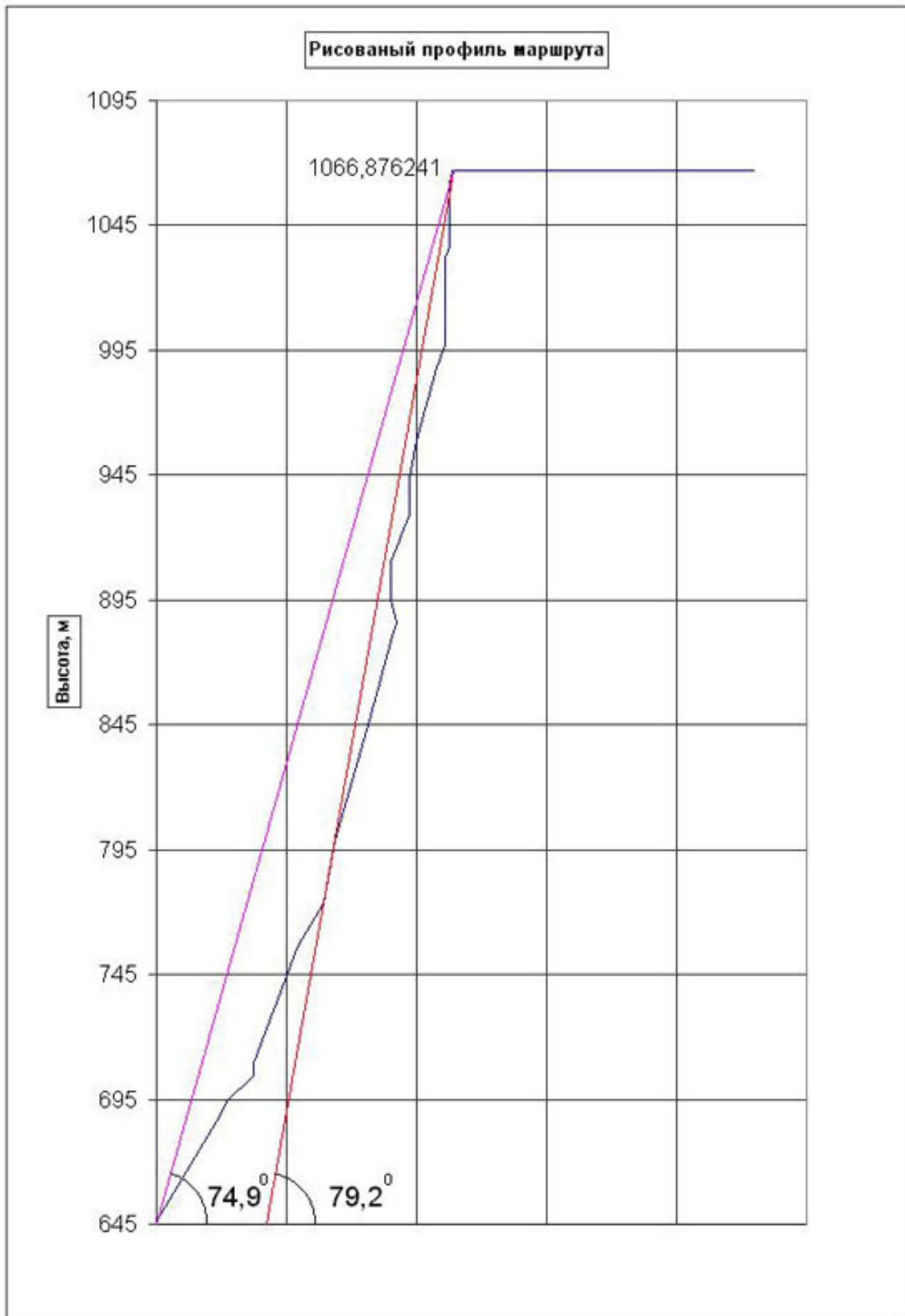
Technical photo of the route with upper sections:



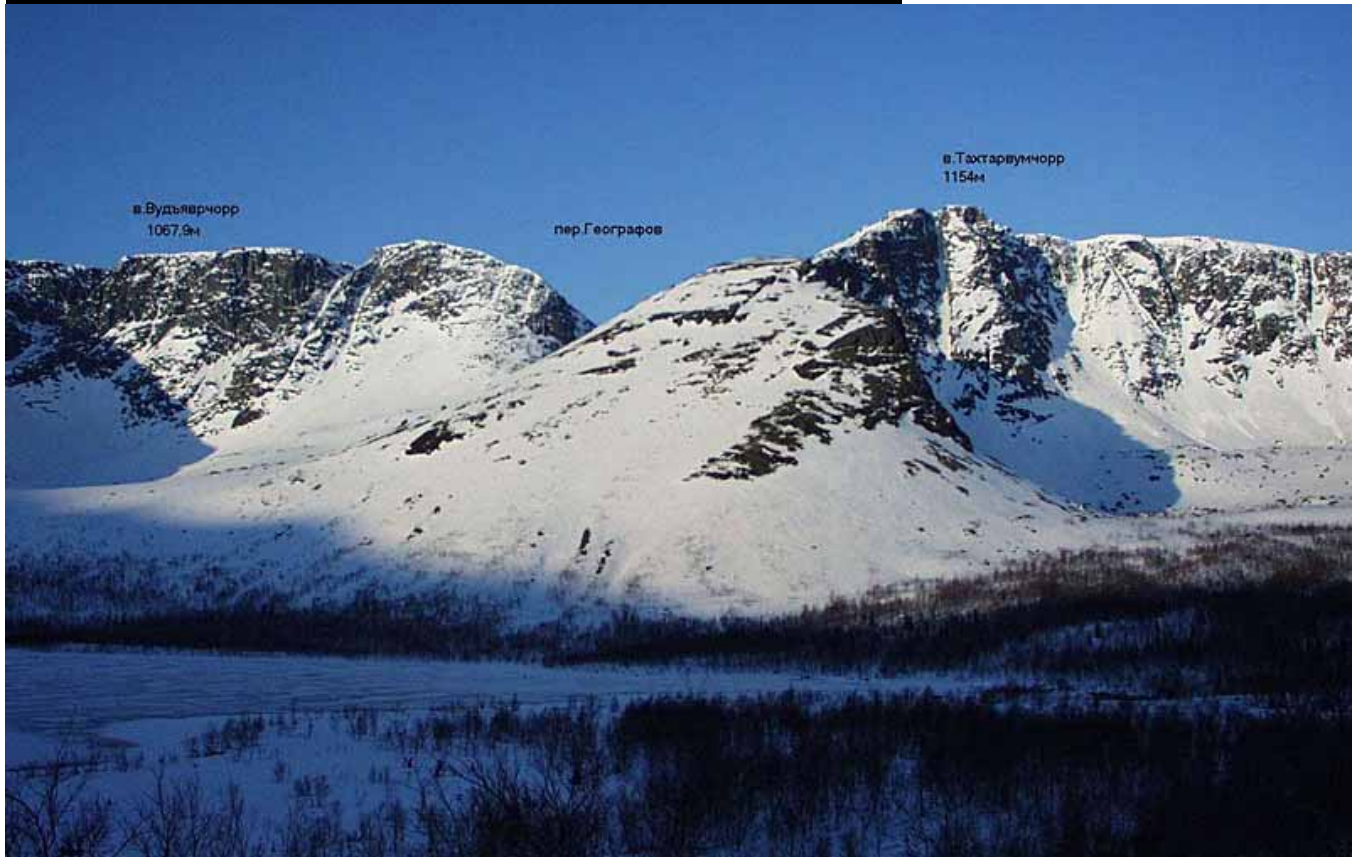
Profile of the wall:



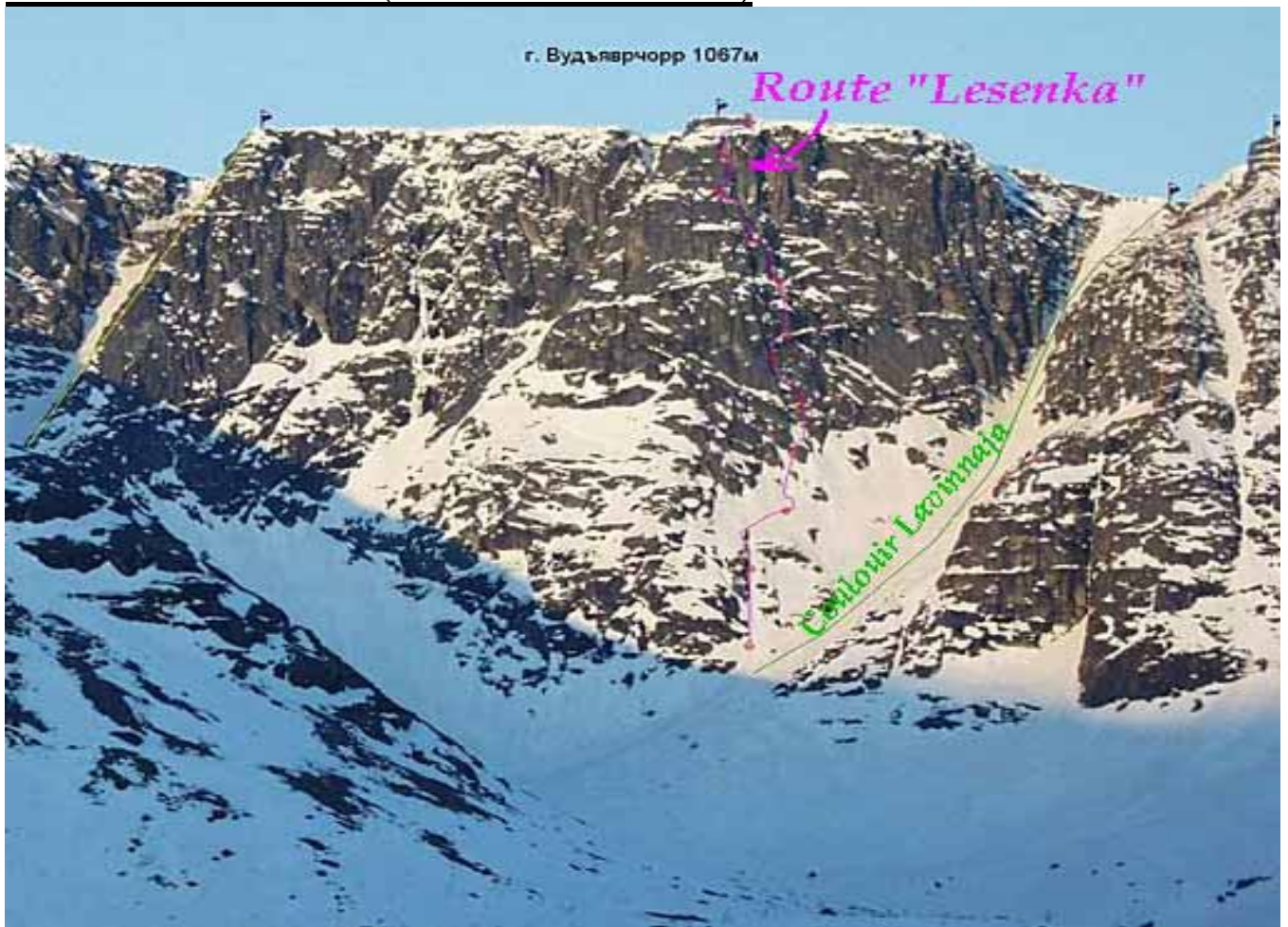
Profile of upper part of the route



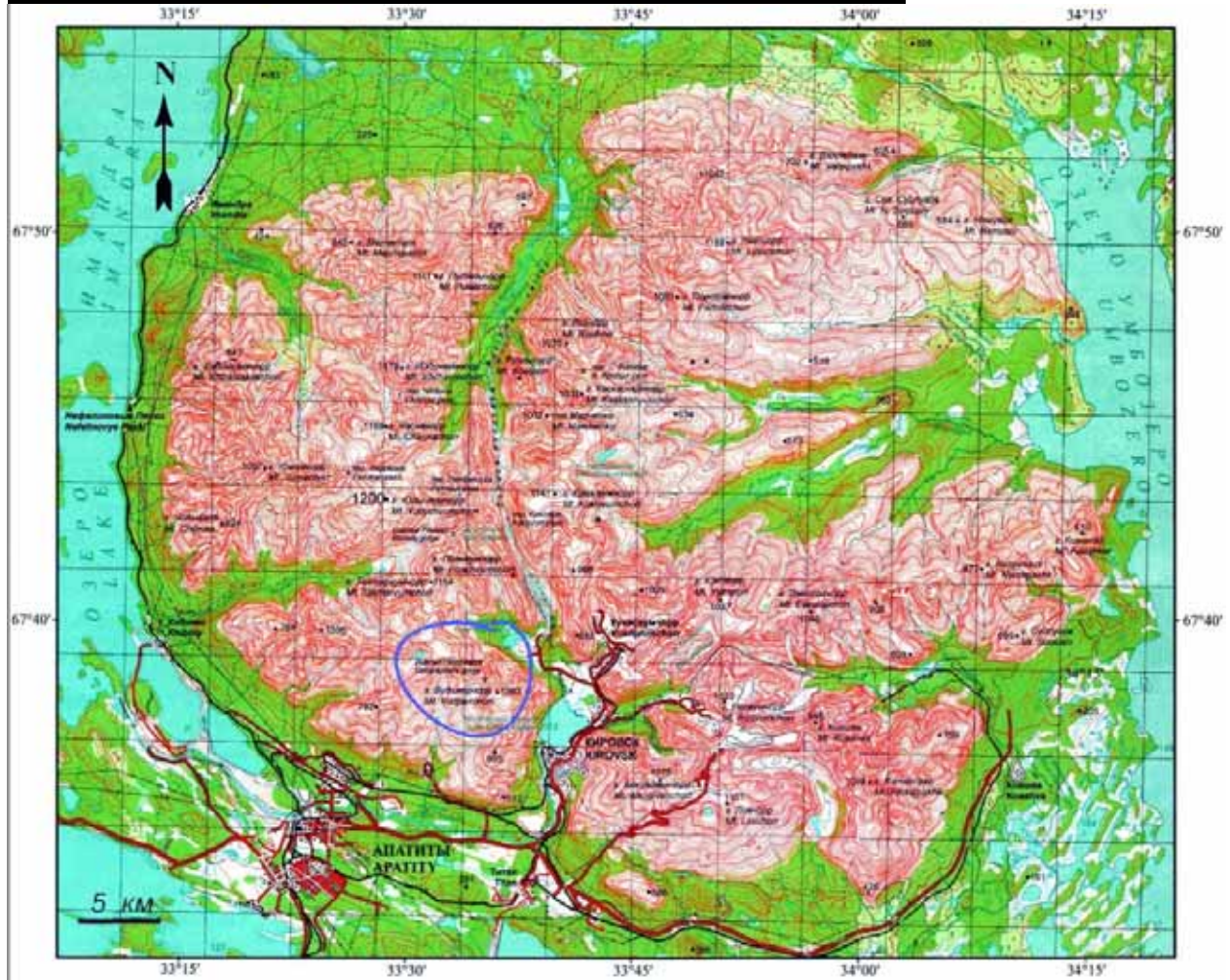
Panorama-view of the area (in winter conditions)



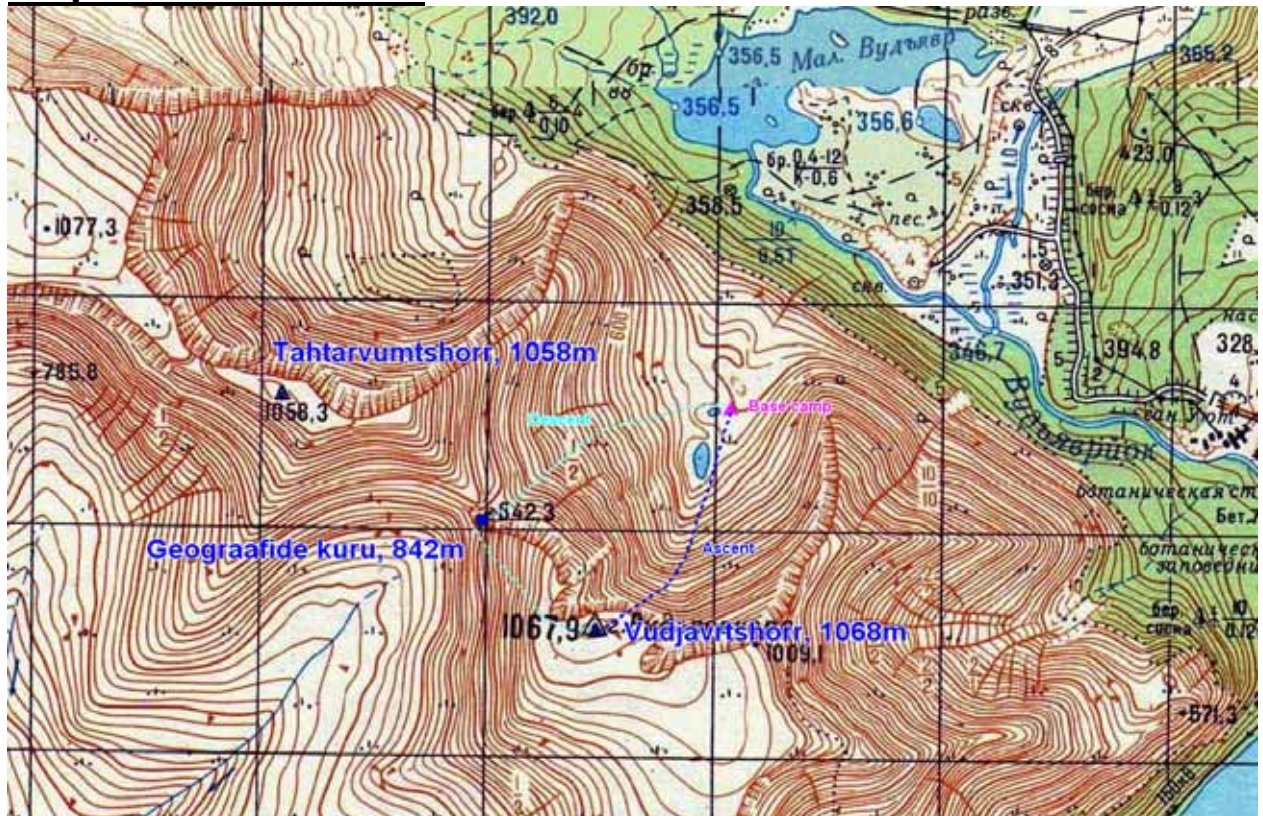
The route "Lesenka" (in winter conditions)



Map of the Khibiny massive and the climbing area



Map of the ascent area



Some comments about the ascent

Basecamp was at height ~510 meters, near the smaller lake, on the foot of the Ganeshin circus, peak Vudjavr. From basecamp to the beginning of the route is approximately 30 minutes walk. The route begins left to the colour Lavinnaja.

In summer (june-july) there is a polar day in the area, so you have 24-hours of day-light and is possible to ascent this route in alpin style. For example, first group climbed this route in 2002, spent on a wall 3 days, 35 hours.

According to the letter we found on control point on the route, it seemed we were third group on this route. This route was lastly climbed by group from alpin-club "Gornjak" (Sankt-Peterburg), climbed this route in may 2004, they have found letter of first climbers from august 2002.

We woke-up at 03:30, left the base camp at 5 AM, started the route at 05:40. We climbed the route with 13 pitches (slightly differs from UIAA schema, as the schema represents the steeper part of the route).

Beneath the first crux section (pitches 1 to 7) we reached at 10:20.

Next crux (25 meters of A4 and A3) we climbed over 3,5 hours.

Beneath the second crux section (pitch 12) we reached at ~19:00.

To climb the second crux (25 meters of A2-A3), it took approx. 2,5 hours.

We stood at the summit at 22:40. Spent time on the route 17 hours.

Descended via pass Geografov, reached the basecamp at 00:00. From camp to camp ~19 hours

Most of the route is good and enjoyable technical climbing (only first 1.5 pitches and part of the last pitch are simple climbing). Good technical climbing skills for all climbers are highly recommended.

There are two crux sections on this route, pitch 6 and pitch 9-10 (according to the UIAA schema), these sections are rated to VI, A3-A4 category difficulty. These section are very tense and unsecure to climb. Group needs very wide selection of technical hardware on these sections.

On pitch 6 the fissure is very narrow and swallow, you need very small-size and thin pitons, also you should have some small-size frends. As the fissure is dumb, mostly placed pitons more likely for moral secure. The progress was made with help of etriers.

On pitch 10 there is oppositely very wide and deep fissure (from 3-4 cm up to 10 cm), you need very large-size frends (mainly) but also you may need some large pitons. We had only 5 large-size frends and were forced to use the following technique - we gained some meters up, then descent and pick-up some frends off to use them on upper section and so on several times we had to rarefy the mid-points from below on this section.

In general the route requires very wide selection of technical hardware, specially concerning to frends and pitons (short to long, thin to thick and large-sizes, both vertical and horizontal ones).

Technical hardware used on the route – pitons 31 times, frends 17 times, nuts 2 times, slings 5 times.

Approximately 30 movements was progressed with help of etriers.

On pitch 5 (according to UIAA schema pitch 3) there is a metal ladder 3-4 meters long hanging on the wall. Therefor this route was named "Lesenka" (*ladder* in english). Even with some intention to use the ladder, we didnt – the rock was solid at this place to move ahead without using it.

Climbing equipment on the ascent

Ropes - 3x50m
 Slings - 12 pc.
 Etriers, 5-steps - 2 pc.
 Jumars/ascenders - 4 pc.
 Hammers - 2 pc.
 Nut tools - 2 pc.
 Carabiners - 20 pc.
 Quickdraws - 15 pc.
 Pitons - 24 pc.
 Frends - 10 pc.
 Nuts/chocks - 14 pc.
 + climbing harness per climber
 + helmet per climber
 + belay advice per climber
 + pair of climbing shoes

Statistics of ascent

Time	Climbed section/pitch	Pitches on tech. chema	Difficulty grade	Placed protection	Comment
05:40	0		-	-	At the beginning of the route
05:45	1	R0	45m ~III	-	Free climbing
06:15	2	R0	50m III+	-	Free climbing
06:25	3	R1	10m IV, 15m III, 25m II	-	Free climbing
06:55	4	R2	50m IV+	-	Free climbing
08:05	5	R3	45m IV	2 pitons, 2 frends, 2 slings	
08:45	6	R4	50m V	2 pitons	
09:40	7	R5	35m V, 5 m VI	2 pitons, 2 chocks	used stationary anchor for the station
13:55	8	R6	10m VI A4, 15m VI A3, 20m IV	11 pitons, 6 frends, 1 sling	First crux!
15:55	9	R7	15m IV, 30m III+	-	Free climbing on pitch + 2 pitons for station
17:00	10	R8	40m IV, 5m III	3 pitons, 2 frends	used stationary anchor for the station
18:30	11	R9	20m VI A3, 15m V, 5m IV	5 pitons, 1 sling	+ 2 pitons for station
21:40	12	R10	25m VI A2	2 pitons, 7-9 frends, 1 sling	Second crux!
22:40	13	R10	30m II+, 5m IV	-	Free climbing

Khibiny 2006 program

Date	Schedule
09.07	Arrival to the area, basecamp near the lake Malyi-Vudjavr
10.07	AM New basecamp near the small lake in Ganeshin circus. PM climbing on rocks
11.07	AM Scouting the area and routes, walk to the foothill of Otkol, Tahtarvumtshorr central circus (hard raining)
12.07	2A route По центру Северной стены восточного отрога «По расщелине», up to peak Tahtarvumtshorr S, 1143m, circus "Otkol" (leading for Marko)
13.07	2B route По северо-восточному контрфорсу Восточной стены центрального цирка, up to peak Tahtarvumtshorr central, 1154m, circus "Pojasov" (leading for Tõnu)
14.07	3B route По 4-му контрфорсу Восточной стены, up to peak Malyi-Vudjavr, 1067 m, (leading for Tõnu)
15.07	4B route Левая часть правого бастиона Восточной стены «Честная девушка», up to peak Bolshoi-Vudjavr, 1068 m, (leading for Andres)
16.07	resting day
17.07	5A route по центру Северной стены «Лесенка», up to peak Bolshoi-Vudjavr, 1068 m, (leading for Andres)
18.07	3A route По 3-му контрфорсу Восточной стены «Кораблик», up to peak Malyi-Vudjavr, 1067 m, (leading for Marko) (raining)
19.07	Departure (hard raining)

Photo1. Andres still learning the route



Photo2. Tōnu on belay



Photo 3. Marko jumaring (and removing the hardware)

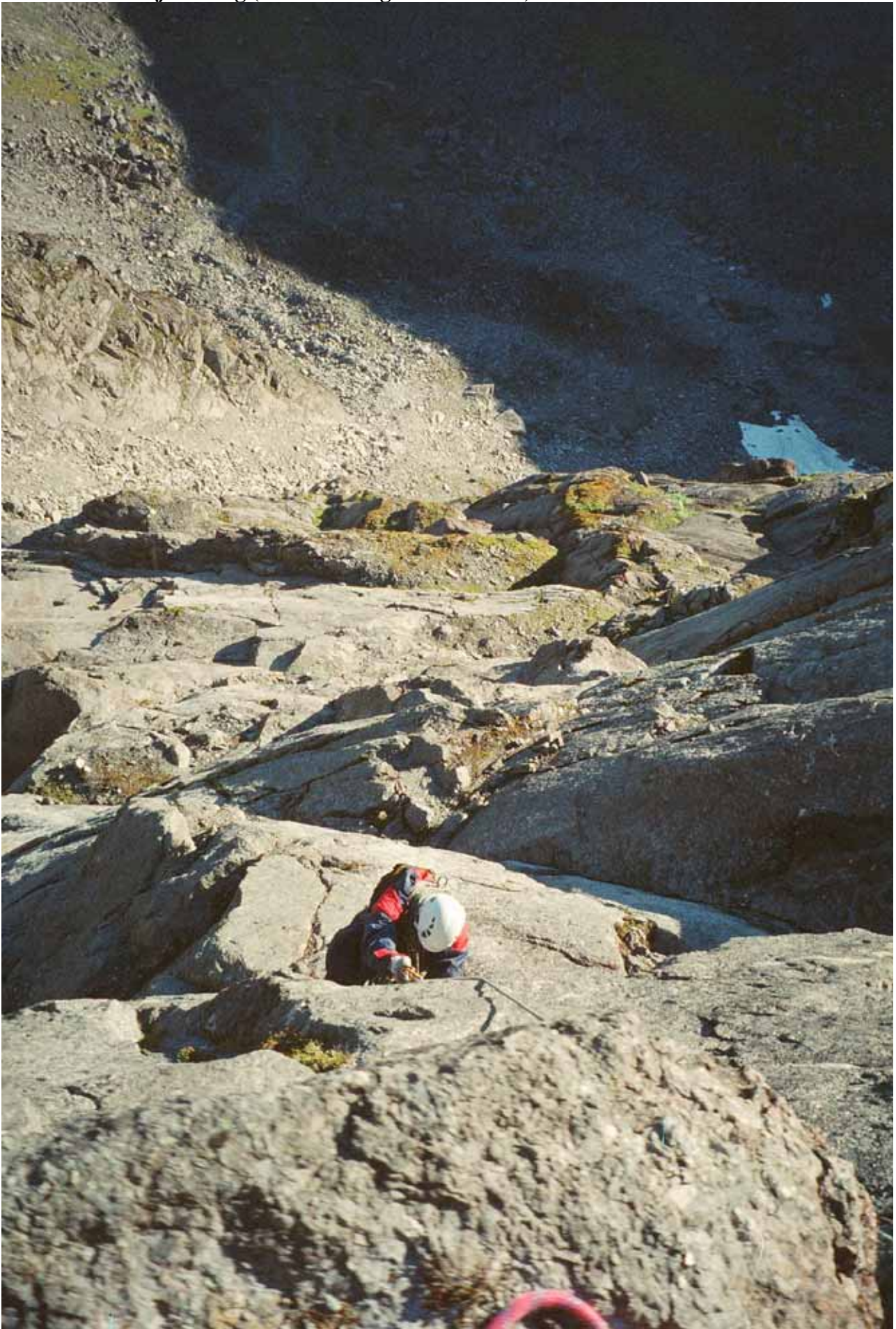


Photo 4. Andres on the first crux – 10m, 100° VI A4 + 15m, 90° VI A3



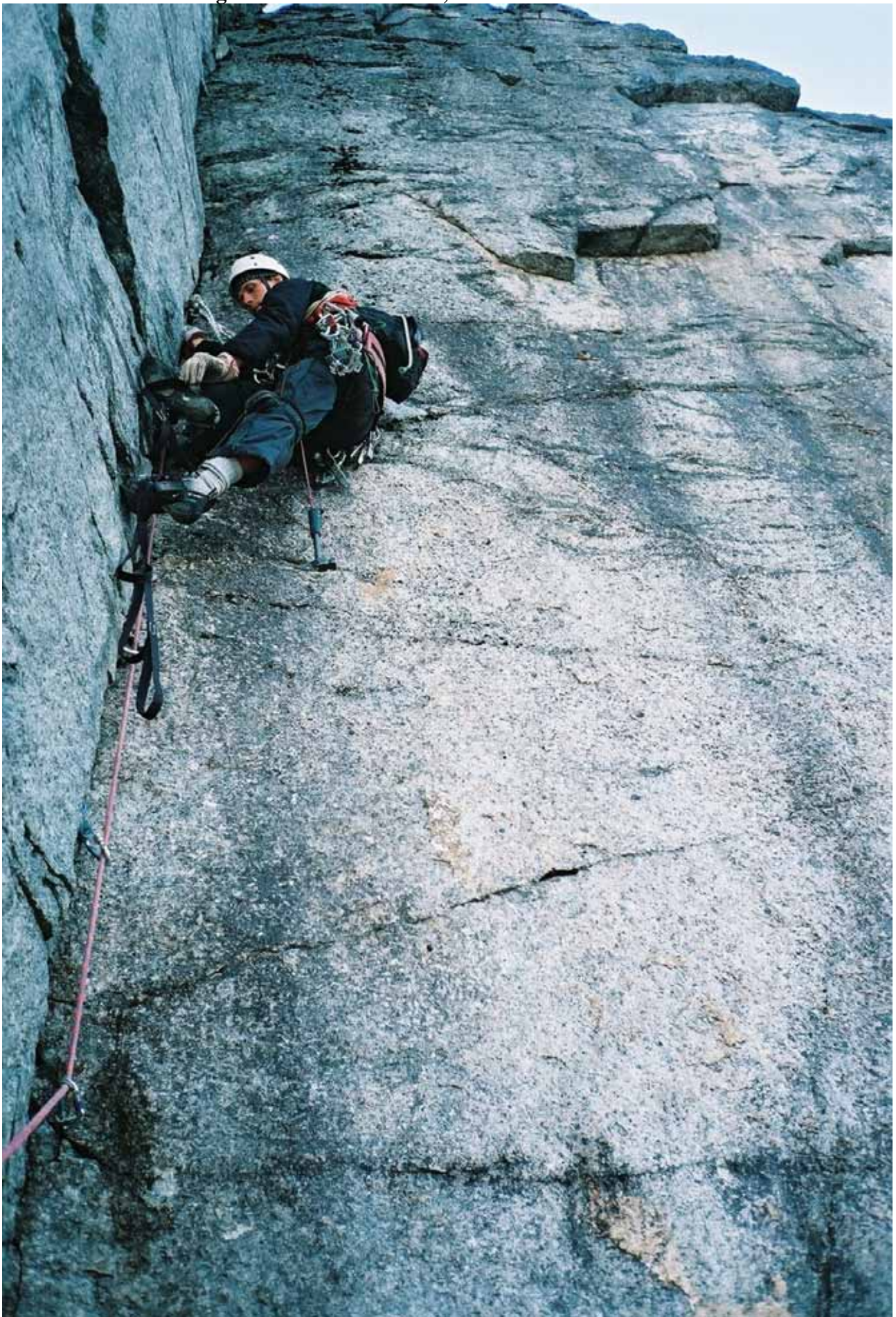
Photo 5. Still on the first crux...



Photo 6. Tõnu somewhere on the upper part



Photo 7. Andres solving the second crux – 25m, 90° VI A2/A3



The team

